

Developing & Operating Land Application Programs
in the Southeast, Elwood Black, Ph.D.



ARM



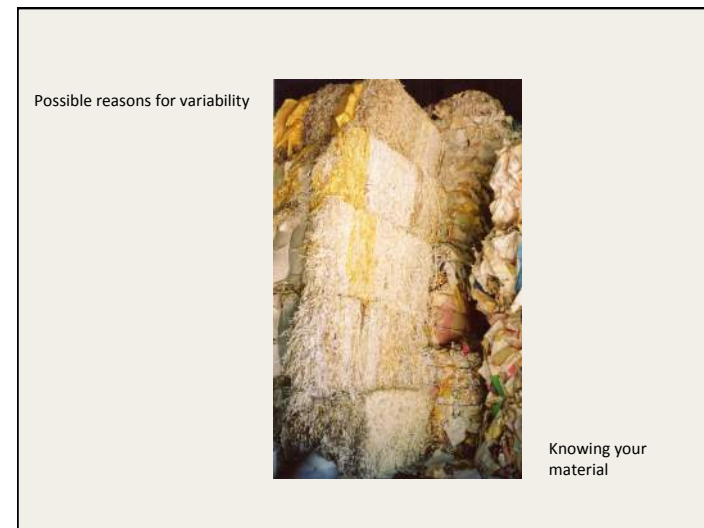
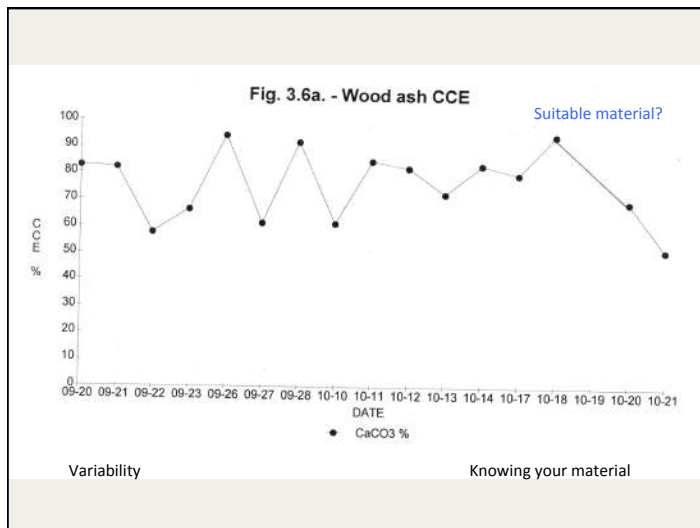
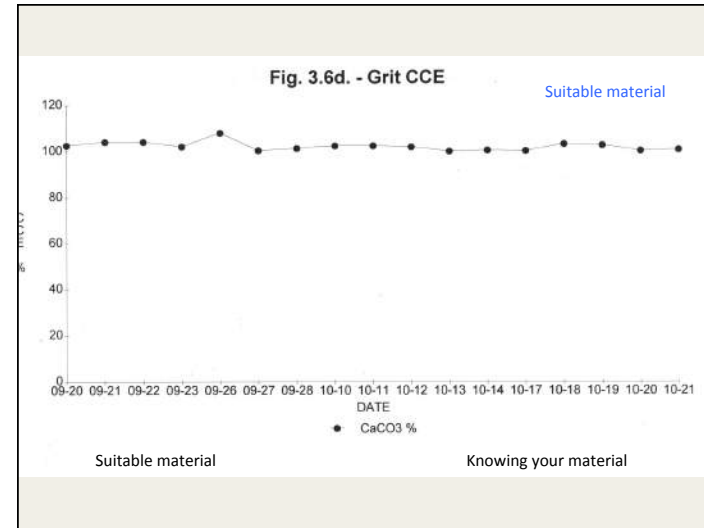
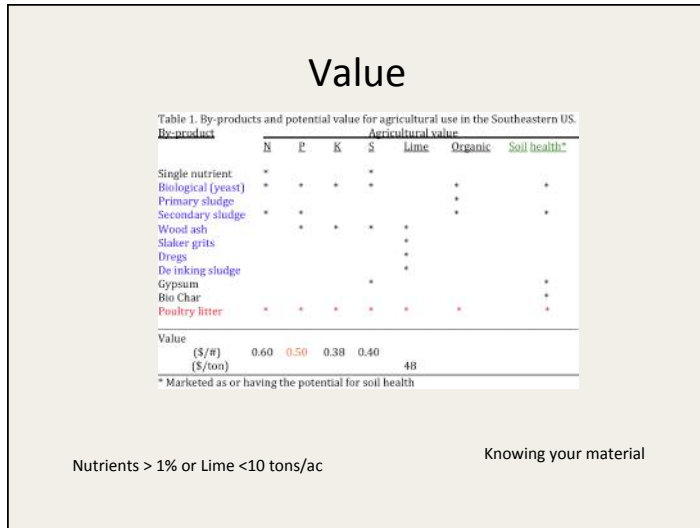
Spread about 280,000 wet tons/yr on 80,000 ac

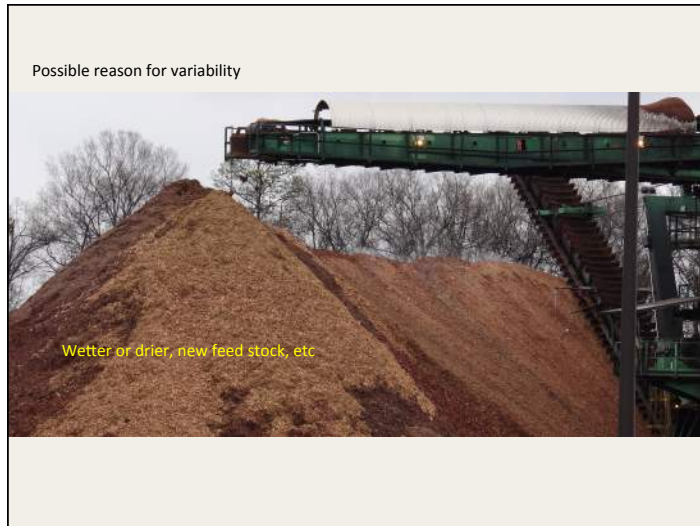
Agricultural By-Product ?

- Local farm land
- Agricultural value
- Suitable material
- Storage
- Operation
- Marketing

Farm land ?







Suitable material

Chemically & bio evaluation

Metals – Ag, As, B, Ba, Cd, Cr, Co, Cu, Fe, Hg, Mo, Ni, Se, Pb, Tl, V & Zn (846-6010 & 7471 & extractable, ag analysis, for Cu & Zn)

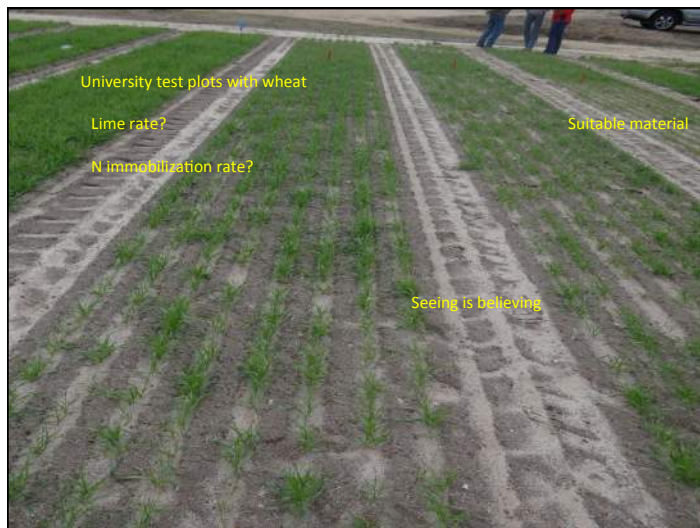
Organics – Volatile (8260) and semi-volatile (8270)

Salt - Na

Pathogens

Now call in the By-Product folks

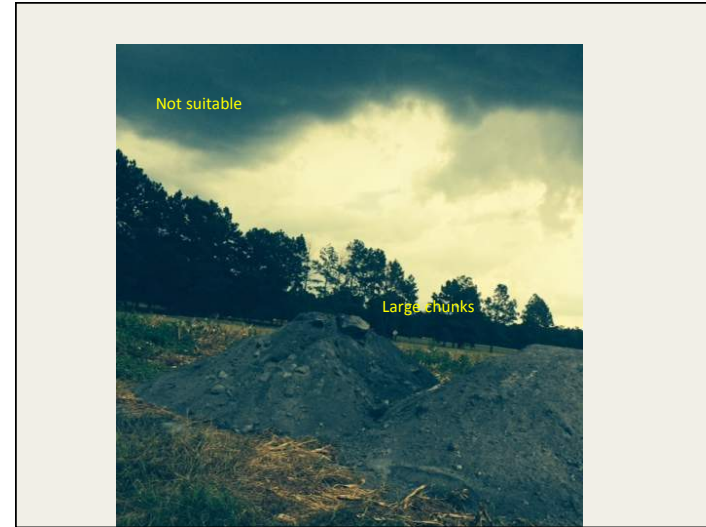
Knowing your material

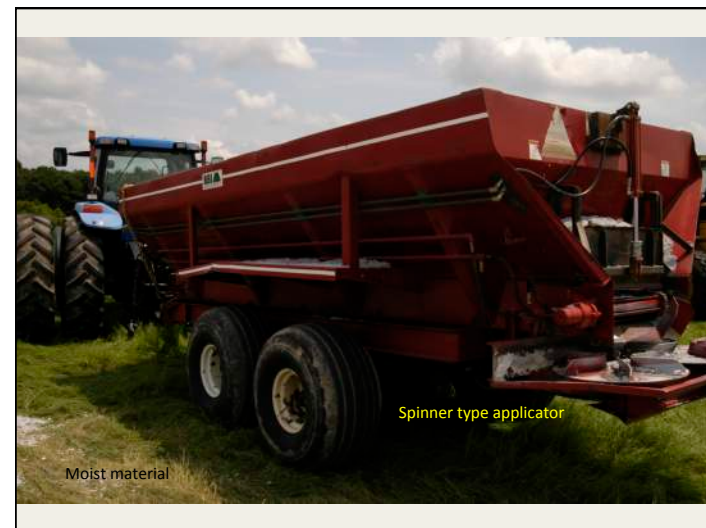


6 wtons by-product = 1 ton Ag Lime

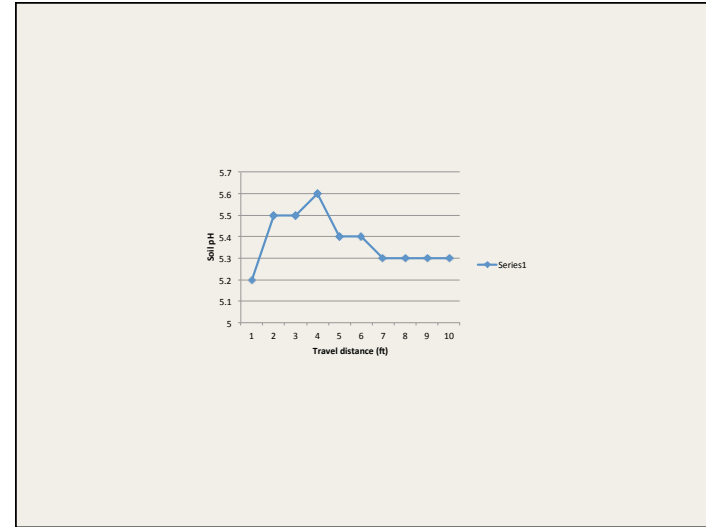
Treatment	Soil pH @ 90 days	Soil pH @ 195 days
Control	6.12	5.92
By-product	6.40	6.46
Lime	6.44	6.48

Knowing your material









Best Marketing

2004 TOP FLORIDA GROWERS ISSUE

FLG FLORIDA GROWER

A Master Publication May 2004 • Since 1959

Grower Of The Year: **C&B Farms** Page 6

Page 14 Citrus Tree Pruning Tips

Page 22 Citrus Mite ID

Marketing
It works & I use it

Agricultural By-Product ?

- Local farm land
- Agricultural value
- Suitable material
- Storage
- Operation
- Marketing